

Firing installation

Wood working and processing

Schreinerei Gustav Krupp (Joinery)
Inh. H.-Peter und Günter Kreutz OHG
D-76437 Rastatt

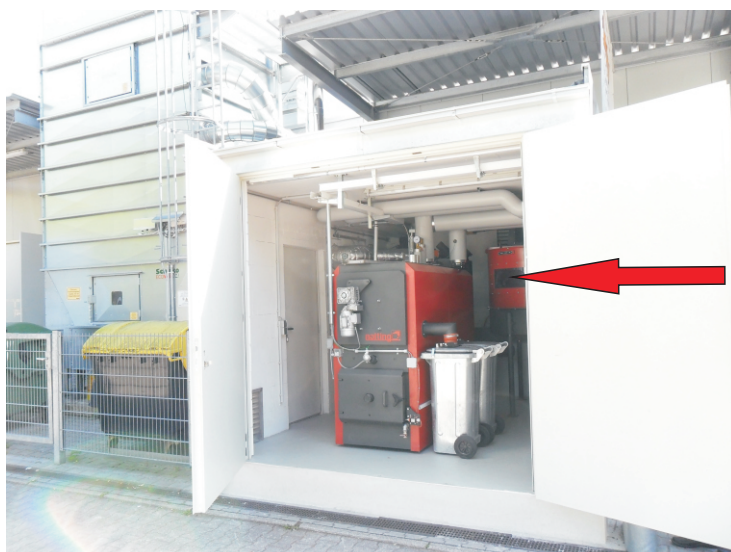
Automatic Underfeed Firing type LCS-RU 70/90
for wood residues from wood
working and processing
Boiler output: 95 kW
with ash discharging unit for combustion room,
flue gas recirculation,
automatic operation regulation,
automatic ignition,
Storage bin type VBR 10

Individual solution, if no space is available:

On the carpentry's ground there is no space to set up a fuel storage. Therefore the wood residues from wood working and processing are pressed into round briquettes.

When the storage bin type VBR 10 demands on fuel, the briquettes are transported with an automatic briquette points in the storage bin

As soon as the robust bin is filled, this information is transmitted to the briquette point, which switches and a skeleton containers is filled. Thus the storage bin is always filled optimally and a overloading is prevented. The automatic fuel transport from type VBR into the underfeed firing is carried regulated by screws.



Storage bin type VBR 10

Automatic Underfeed Firing type LCS-RU 70/90
with 2 ash collection boxes